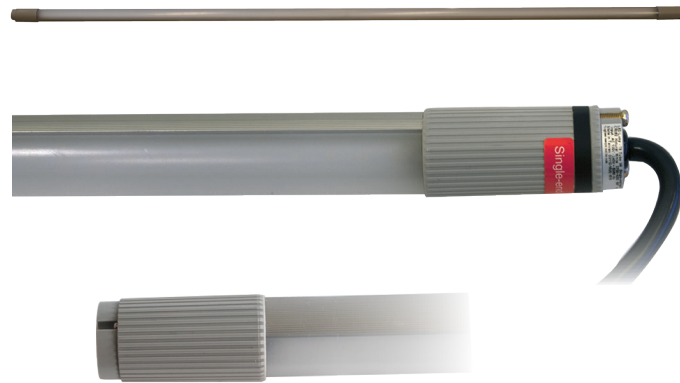


Tunnel Light - 42W

Model Number: VL T3TU-42-BW, electrical numbers on page 3

Features:

- ▶ Instant clip function
- ▶ High power-efficiency
- ▶ Flat light surface
- ▶ Low temperature
- ▶ Long service life
- ▶ Also available as frost tube and emergency light model
- ▶ Also available as Schuko and Wieland plug



5500
lm*

130
lm/W*

≥82
Ra

Application:

- ▶ Tunnels
- ▶ Technical facilities
- ▶ Service Corridors, Canals
- ▶ Temporary lighting



starQuick 28-32mm
Self-locking pipe clamp



Spring Steel Clip

Optical Information

Color Temperature	3000K, 4000K, 5700K
Lumen Output (lumen)	5000, 5300, 5500
Optics	180°
CRI	≥82
Lumen Maintenance (L70)	50,000h +

Environmental Factor

Operating Temperature	-40 ~ +40°C
Protection Level	IP65
Warranty	3 years

Mechanical Information

Dimensions (W x H)	1200mm x 31.5mm
Weight	433g
Connecting Cable	1300mm

Electrical Information

Input Voltage	100-240V AC
Power Consumption	42W
Dimmability	Optio

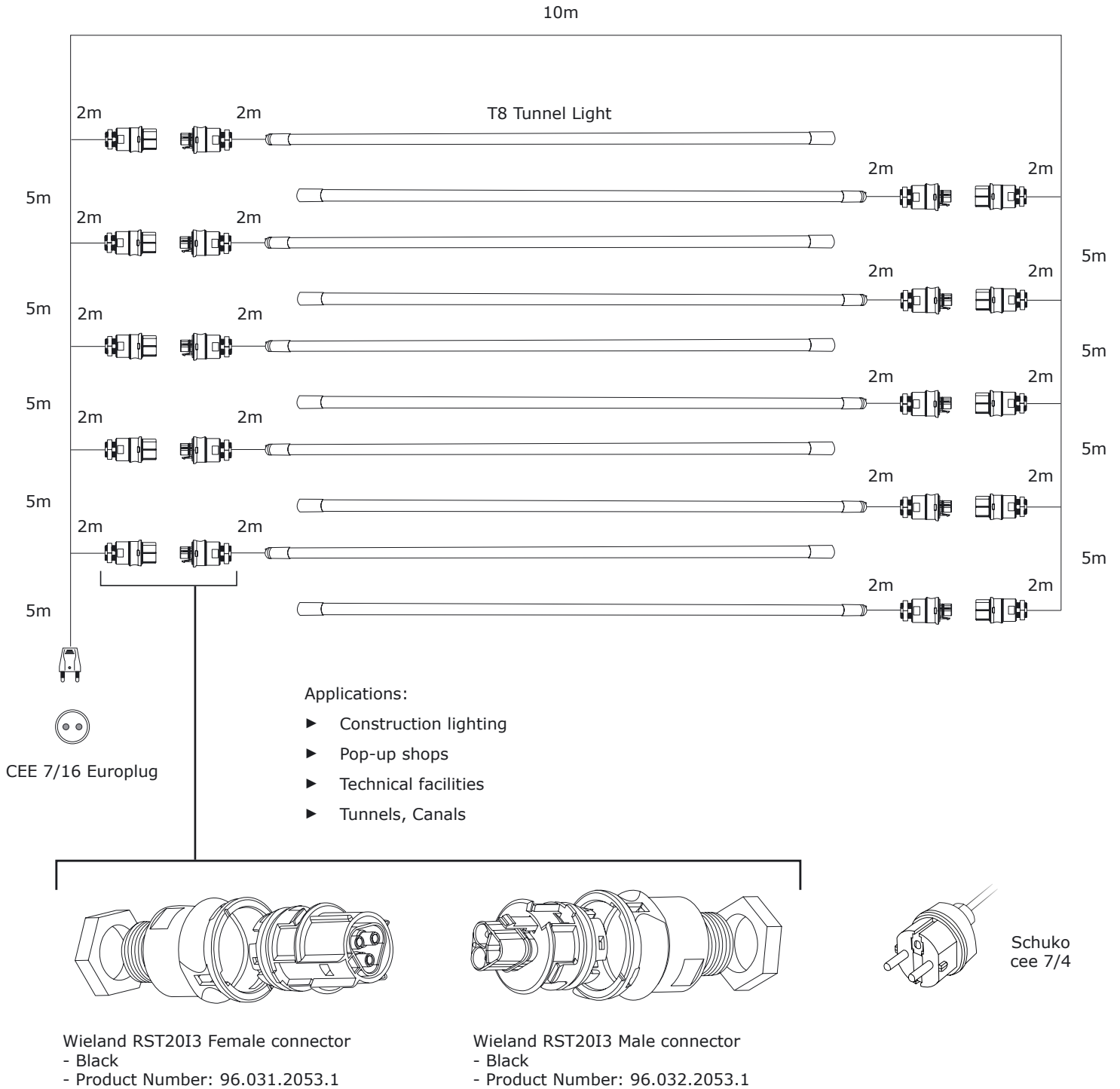
*The values for 5700K version

Tunnel Light - 42W

Model Number: VL T3TU-42-BW, electrical numbers on page 3

Mobile lighting system

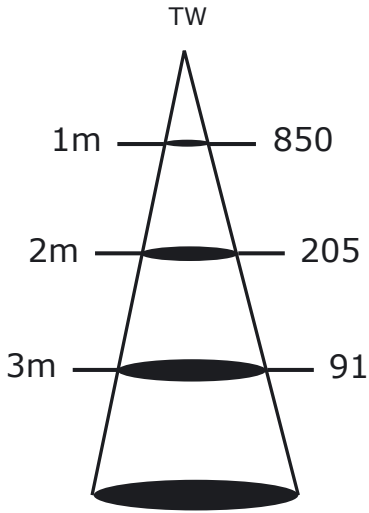
System diagram



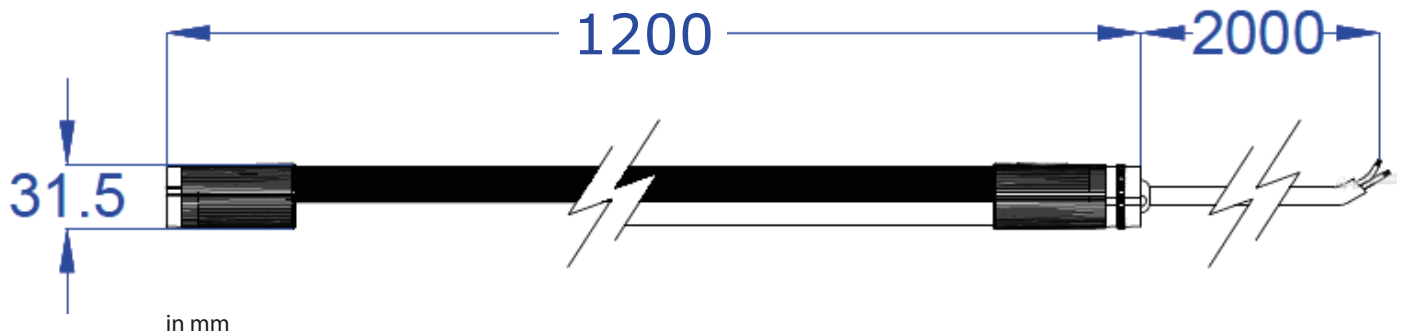
Tunnel Light - 42W

Model Number: VL T3TU-42-BW

Illuminance at Distance



Lux (Typ.)



Power	Product Numbers	Beam Angle	CCT	lux @ 1m	Lumen (lm)
42W	VL T03BWP42QF-40	180°	3000K	850	5000
	VL T03BNP42QF-40	180°	4000K		5300
	VL T03BTP42QF-40	180°	5700K		5500

Also available:

Length: 1500mm (5ft)

Color Temperatures: 2500K, 3500K, 4500K and 7000K

CRI 92

